

CABLE 261 RF: RF CABLE ASSEMBLY, I-PEX MHF 4L+ FRONT MOUNT SMA S/T BULKHEAD JACK + 1.13 CABLE - 6GHz

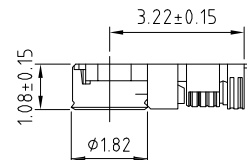
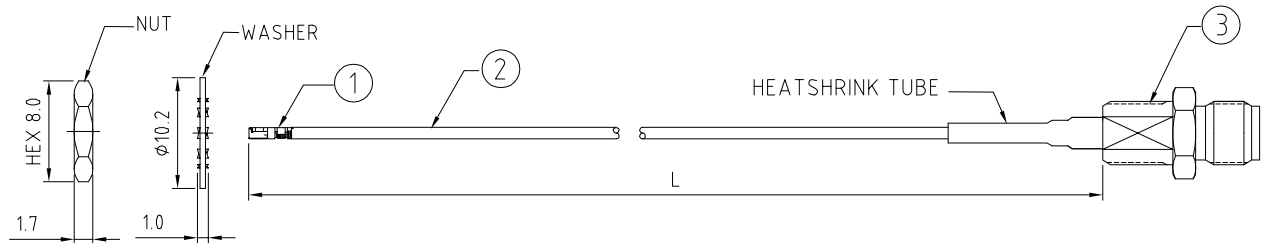
SPECIFICATIONS :

1. I-PEX MHF 4L PLUG, P/N: 20565-001R-13
2. ϕ 1.13MM COAXIAL CABLE, COLOR: GRAY
3. FRONT MOUNT SMA STRAIGHT BULKHEAD JACK (RFCT-SMA020-F13).

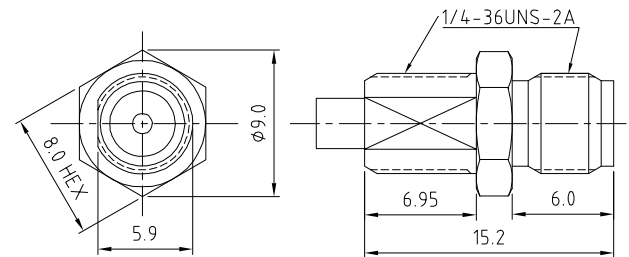
NOTES:

1. THE ORIENTATION OF CONNECTORS ON DRAWING IS FOR REFERENCE ONLY, IF THE ORDER IS LEFT BLANK THE CONNECTOR WILL NOT HAVE FIXED ORIENTATION.
2. FIXED ORIENTATION IS SUGGESTED FOR CABLE LENGTH 25MM TO 100MM. PLEASE SPECIFY THE FIXED ORIENTATIONS FROM THE ORDER CODE (F1, F2, ETC)
3. CONTACT GRADCONN IF THE ORIENTATION YOU REQUIRE IS NOT SHOWN.
4. WORKING FREQUENCY RANGE: DC-6GHz
5. IT IS INTENDED THAT MOUNTING OF THIS CONNECTOR IS ACHIEVED USING THE NUT AND WASHER PROVIDED. PLEASE CONTACT GRADCONN FOR ADVISE IF PLANNING TO USE A DIFFERENT METHOD OF MOUNTING.
6. OPERATING TEMPERATURE: -40°C TO +85°C
7. IMPEDANCE: 50 OHM.

USAGE PRECAUTIONS: CABLES USING 'MICRO' COAX ARE DELICATE:
 (i) HANDLE WITH CARE.
 (ii) DO NOT TWIST; APPLY EXCESSIVE FORCES OR SHARP BENDS TO THE CABLE. DO NOT FORCEFULLY DEFORM WIRES.
 (iii) CONSULT CONNECTOR MANUFACTURER'S DATASHEETS FOR DETAILED NOTES ON HANDLING INSTRUCTIONS.



I-PEX 4L DETAIL DRAWING



SMA JACK DETAIL DIMENSION

HOW TO ORDER

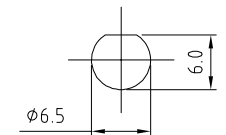
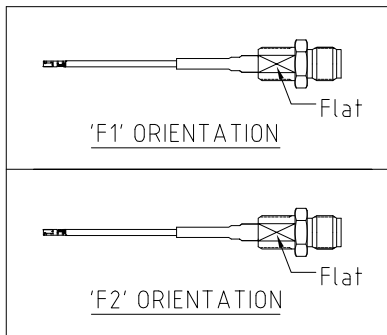
CABLE 261 RF - X X X - X X - X - 1

"L" LENGTH IN MM:
 eg: 100MM = 100
 (MIN. 025-MAX.400)
 STANDARD = 100, 150, 200)
 Tolerance: <50mm : ±2mm.
 51-200mm: ±5mm.
 201-400mm: ±7mm.

CABLE SIZE:
 1 = ϕ 1.13MM CABLE, COLOR: GRAY

WASHER AND NUT OPTIONS:
 BLANK = SEPARATELY PACKED (STANDARD)
 A = ASSEMBLED WITH CONNECTOR

ORIENTATION OPTIONS:
 BLANK = DOES NOT HAVE A FIXED ORIENTATION
 F1 = MHF CONNECTION DOWN (L=25-200MM)
 F2 = MHF CONNECTION UP (L=25-200MM)
 (SEE NOTES 1, 2, 3 AND DIAGRAMS FOR MORE INFORMATION)



RECOMMENDED SMA MOUNTING HOLE

REV. DATE & DRN
 10 17/02/17 - NYW RELEASE
 11 20/08/20 - NYW
 ADD NOTE 5.
 12 26/04/21 - NYW
 ADD NOTE 6 & 7.

| | | | | |
|-------------------|----------------------|--|---|----------------------|
| Scale: NTS | THIRD ANGLE | Unstated X .XX .XXX ANGLES | Tolerances: N/A N/A N/A N/A | Material SEE NOTE |
| Drawn: NYW | | | | |
| App'd: XXX | Title CABLE ASSEMBLY | NOT TO SCALE | | |
| Date: 26 APR. '21 | Revision: 1.2 | Unit: mm | | |

www.gradconn.com

THIS DRAWING IS CONFIDENTIAL AND MUST NOT BE COPIED OR DISCLOSED WITHOUT WRITTEN CONSENT

| |
|---------------------|
| Type: Cable 261 RF |
| CABLE 261 RF |
| Drawing Number: |
| Sheet 1 of 1 |
| Drawing © E and O E |